

To schedule an appointment or arrange a consultation with an imaging specialist about a specific patient case, call **609.921.8211**.

Or visit **www.PrincetonRadiology.com** to request an appointment.



Princeton

Princeton Healthcare Center
419 N. Harrison Street

Monroe

Monroe Centre at Forsgate
9 Centre Drive

Mercerville

Quakerbridge Office
8 Quakerbridge Plaza

Freehold

Medical Arts Building
901 W. Main Street

Marlboro

Northpoint Professional Building
176 Route 9 North

Wayne

330 Ratzer Road

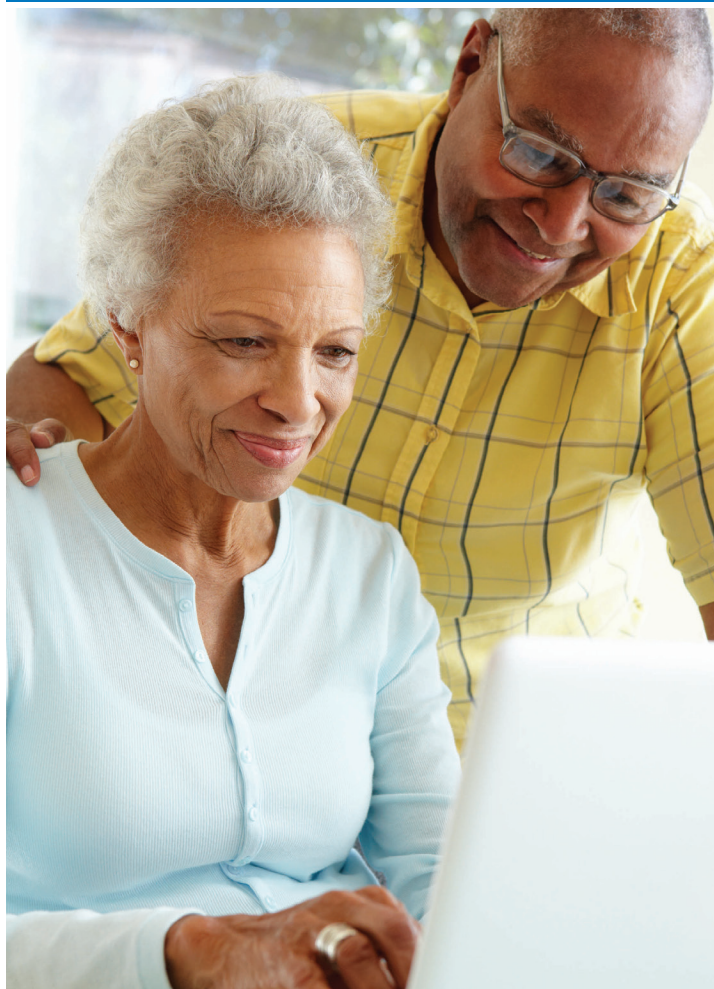
Mountain Lakes

333 U.S. 46, Suite 105



Low-Dose CT

Comprehensive CT services
to meet your needs



Intricate diagnostic detail.
Lower radiation dose.
Better patient experience.



Comprehensive CT Services

Computed Tomography (CT) uses computer-processed x-rays to create detailed pictures of cross-sections (or "slices") of the body to determine the location, nature and extent of many different diseases or abnormalities. At Princeton Radiology we have 16-, 64- and 128-slice scanners for specified imaging studies.

"Excellence in Imaging" is our promise—

Our state-of-the-art, high resolution, low-dose CT scanners include advanced dose-reduction technology that adjusts to each patient's size, weight, and anatomy. The result is outstanding diagnostic quality with radiation exposure reduced up to 80 percent, making CT an even more attractive diagnostic or screening exam.

Expert Interpretations

Even the most advanced equipment won't produce the best results unless it's in the hands of appropriately trained experts. At Princeton Radiology, you can count on a prompt, accurate report from a physician with subspecialty diagnostic training in the area of anatomy being studied. Our team includes experts in body imaging, neuroimaging, musculoskeletal imaging, cardiovascular imaging, breast imaging, pediatric imaging, nuclear medicine, and general diagnostic radiology. Locally based, they are available to consult with your physician on the optimal exam, equipment, and protocol for you.

Better Patient Experience

"Excellence in Imaging" begins with clinical excellence, but it doesn't end there.

- **We respect your time.**

Fast scheduling, less time in the waiting room, prompt results to your doctor.

- **Patient-friendly hours.**

We cater to your schedule with daytime, evening and weekend hours.

- **Conveniently accessible.**

Easy access to CT services with ample parking at our convenient locations in Princeton, Monroe, Mercerville, Freehold, Marlboro, Wayne, and Mountain Lakes.

- **Comfortable experience.**

Our goal is to provide every patient with the most comfortable and positive experience possible. From our friendly and caring staff to our beautiful imaging facilities, everything we do is focused on you.