

# Introducing PET/CT with PYLARIFY<sup>®</sup>

A powerful new tool  
to fight metastatic  
prostate cancer

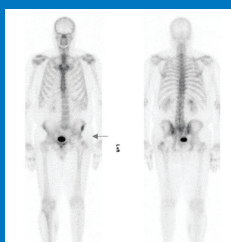


With metastatic prostate cancer incidence on the rise according to the American Cancer Society, early detection is more important than ever. Princeton Radiology introduces PET/CT with PYLARIFY®, a powerful solution that was recently approved for coverage by the Centers for Medicare and Medicaid Services (CMS). With PET/CT with PYLARIFY®, Princeton Radiology can support your approach to care for prostate cancer patients.

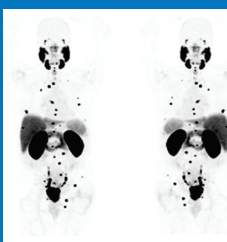
- Accurately identifies sites of disease for newly diagnosed patients who are candidates for definitive treatment
- Identifies sites of metastatic disease in patients who have undergone definitive therapy but have rising PSA

### Advantages of PYLARIFY®:

- Detects metastases earlier and more accurately in lymph nodes, bone, and soft tissue than CT scanning or Bone Scan
- Supports informed treatment decisions and planning precisely targeted therapy
- Covered by Medicare Insurance
- Can be covered by commercial insurance plans with pre-certification



Bone Scan



PET Image with PYLARIFY®

To reach our dedicated physician line for expedited patient scheduling or to arrange a consultation with a Princeton radiologist, call 609.921.3345 and dial 6.



609.921.8211 | [PrincetonRadiology.com](http://PrincetonRadiology.com)  
Princeton | Monroe | Mercerville | Freehold | Marlboro