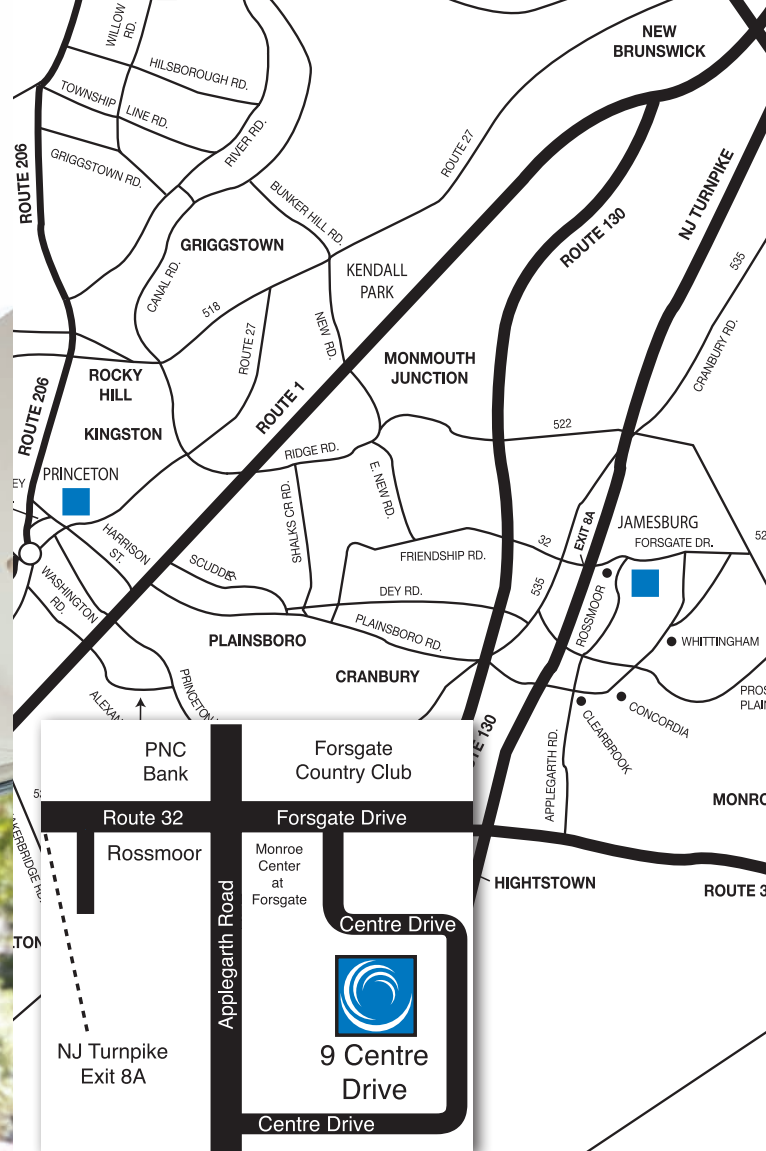


## Wide Bore 3.0 T MRI now in our Monroe Office!

Combining the widest opening ("WIDE Bore") available for comfort, with the highest strength magnet in the area, for the fastest, highest quality scans and a greater range of imaging capabilities.

Princeton Radiology is dedicated to improving our services and capabilities with state-of-the-art imaging.

- Widest Opening Available for Comfort for Everyone
- Highest Strength Magnet 3.0 T
- Fastest Scans
- Highest Image Quality
- Latest MRI Advances



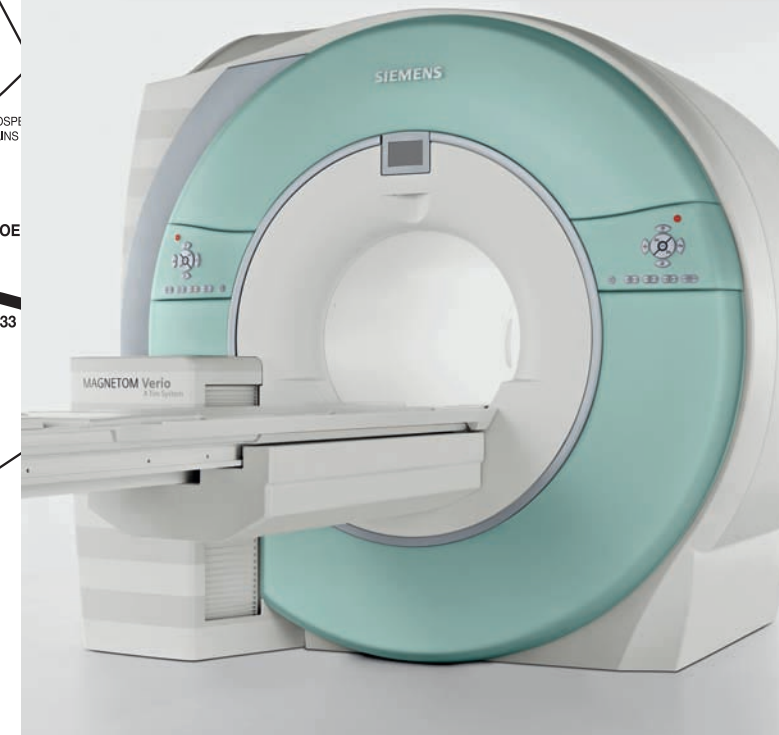
### Directions to Princeton Radiology

*From the NJ Turnpike:*

Exit at 8A. After the toll, follow the signs toward Jamesburg onto Forsgate Drive. Just after the second traffic light, on the right will be a sign for Monroe Centre at Forsgate. This is across from the Forsgate Country Club. Turn right onto Centre Drive to Building #9, Princeton Radiology.

## WIDE Bore 3.0 T MRI

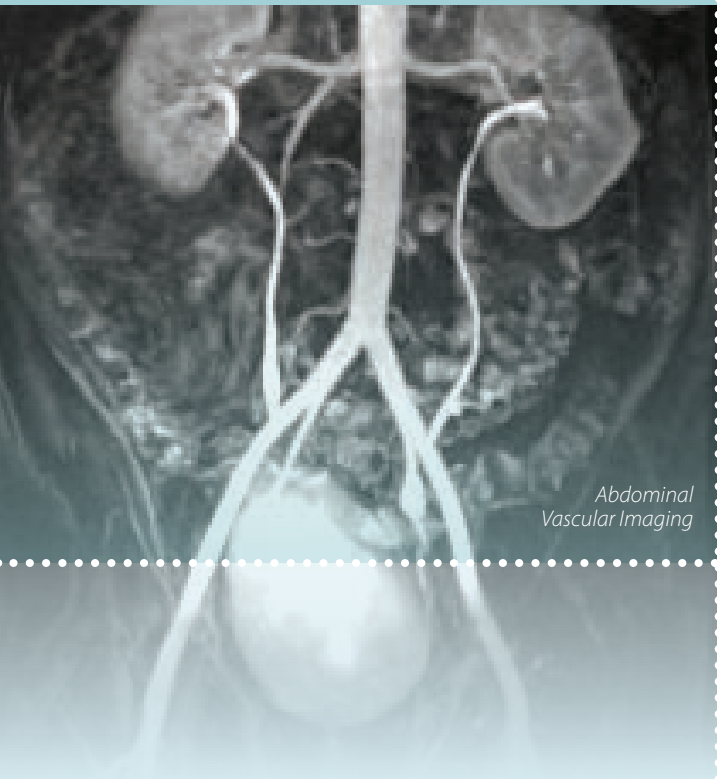
The Only WIDE Bore 3.0 T MRI In Central New Jersey!



 **Princeton Radiology**  
*Excellence in Imaging*



“Once a patient has experienced our Wide Bore 3.0 T, they won’t want to go anywhere else for MRI imaging.”



Abdominal Vascular Imaging

## Wide Bore 3.0 T MRI – *FIRST IN CENTRAL NEW JERSEY*

- The newest, strongest MRI in the market with the latest imaging advances.
- The additional opening area of **158 square inches** (adding another **12.4 inches** to the circumference) makes it truly a WIDE bore scanner.
- Superior image quality, much faster scan times, and more imaging capabilities for state of the art diagnosis.

## Less Claustrophobia

- An excellent option for children, claustrophobic and obese patients - weight limit **up to 550 lbs.** These patients now have access to the best image quality available.
- **SHORTEST** bore of any magnet currently available - more like a CT scanner; abdominal imaging can be performed with the patients’ head out of the scanner.
- We invite you to visit our Monroe office to see just how spacious our new Wide Bore 3T really is!

## Relaxing and Soothing MRI Experience

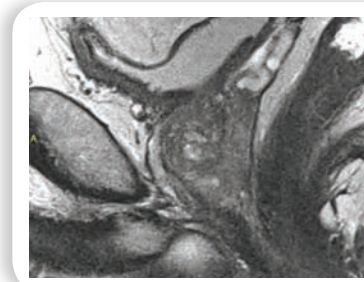
- Scan room redesigned with a wall of windows and skylight for lots of natural light.
- This MRI experience provides patient’s the “breathing room” everyone has been wanting!

## Princeton Radiology Has It All

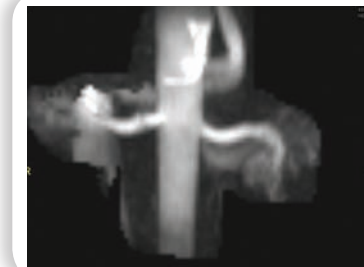
- Full range of MRI scanners - from the “Open” MRI for claustrophobic and obese patients; the 1.5T MRI the Gold Standard of MRI imaging; and now the WIDE bore 3.0T.
- Performing MRI in Central New Jersey for over 20 years with dedicated MRI radiologists in neurology and body imaging.

*No matter what your MRI imaging needs may be, we provide the best quality and service in our friendly, comfortable, and convenient outpatient facilities.*

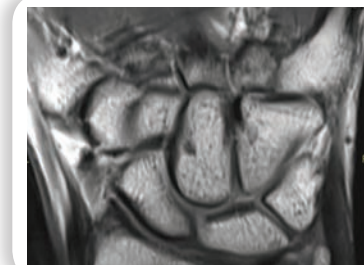
***With WIDE Bore 3.0T - the best just got better!***



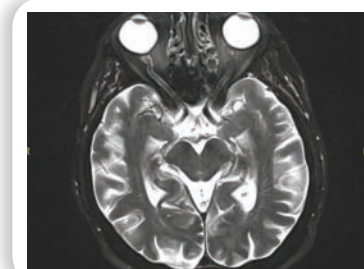
High Resolution Prostate Image **without** need of an endorectal coil and prep



MRA Renal **without** contrast



Wrist High Resolution Coil Technology



Head with Optic Nerves

**For More Information** If you have any questions about Wide Bore 3.0 T MRI , contact our *Monroe Office* at 609.655.1448 from 8:00 A.M. to 5:00 P.M., or visit us online at [www.princetonradiology.com](http://www.princetonradiology.com).